



An Overview...

The following pages we have put together as some of the exciting ideas of what there is to see and do in & around our Cairngorm Bothies. Simply click the image and buttons to go online to find out more. We hope you find it a useful starter guide for planning your stay with us.



**What Walks & Trails
are nearby?
Pages 2-4**



**What Attractions
are nearby?
Pages 5 - 6**



**Which of Our Local Shops
thats nearby?
Page 7**



**Where to Eat
thats nearby?
Page 8**



**Family Fun Activities at
Cairngorm Bothies
Pages 9 -10**



**Other Areas & Information
to help during your stay
Page 11**



What Walks & Trails?

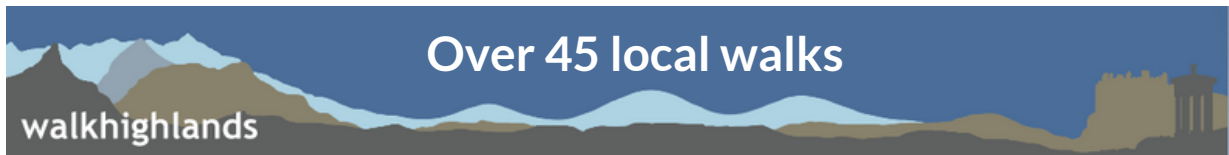
An overview of whats nearby us...

Logie Coldstone is a beautiful village located in Aberdeenshire, Scotland. There are numerous walks in and around this charming village that offer breathtaking views and an opportunity to explore the Scottish countryside.

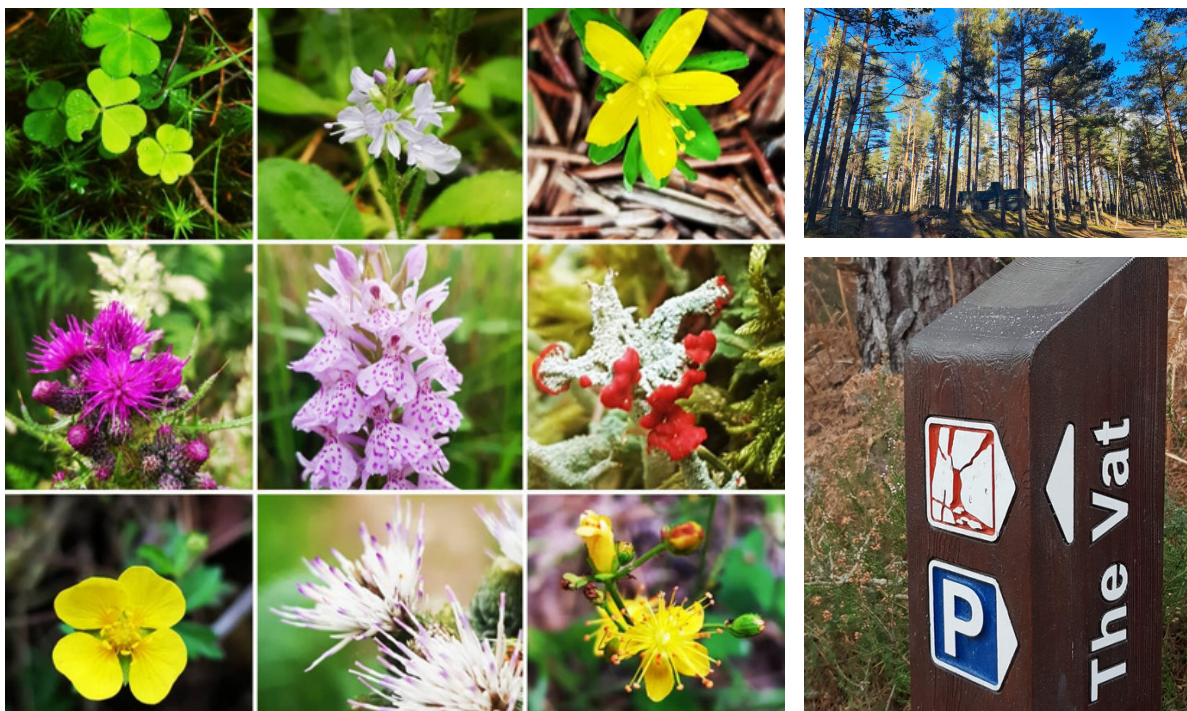
One of the most popular walks in Logie Coldstone is the Burn o' Vat Trail, which takes you through a stunning natural gorge with towering cliffs and cascading waterfalls. Another popular route is the White Mounth Munros, which is a challenging hike that takes you through the majestic Cairngorms National Park.

For those who prefer a more leisurely stroll, there are several shorter walks around the village that showcase the local flora and fauna. The Logie Coldstone Circular Walk is a great option, offering scenic views of the surrounding hills and fields.

Overall, Logie Coldstone is a perfect destination for anyone who loves nature and outdoor activities. With its picturesque countryside and stunning trails, it's no surprise that the village attracts visitors from all over the world.



Great guide to local works in the Cairngorms and Aberdeenshire...



[Book Your Bothy](#)

What Walks & Trails?

An overview of whats nearby us...

Pictish Symbol Stones
A list of the locations of Pictish symbol stones, which are some of the most important archaeological remains of the Pictish civilisation. They are found in the north of Scotland and are a unique form of Pictish art. The stones are carved from soapstone or granite and feature a variety of symbols, including animals, geometric shapes, and human figures. Some stones are also inscribed with Pictish or Gaelic text.

The Pictish Period 300 AD - 900 AD
The region of the Pictish civilisation is located in the north of Scotland. The Pictish civilisation was a complex society, with a highly developed culture. They were known for their art, particularly their stone carvings. The Pictish civilisation was a unique blend of Celtic and Germanic influences. They were a powerful force in the north of Scotland, and their culture was a significant part of the Scottish heritage.

When exploring Aberdeenshire, please follow the Scottish Outdoor Access Code:
Respect the interests of others
Care for the environment
Take responsibility for your own actions
Scheduled Monuments

the Pictish Stone trail
A guide to some of the best Pictish Stones in Aberdeenshire

Thanks to Aberdeenshire Council for this publication

BIKEO GLENLIVET



Mountain Biking Trails...



Mountain Biking Trails...

An Introduction to the Historic Churches of Aberdeenshire
Aberdeenshire is home to over 140 historic churches and chapels. These buildings are a testament to the rich architectural heritage of the region. They range from simple stone structures to grand, ornate edifices. The churches are a central part of the community and have played a significant role in the region's history and culture.

When exploring Aberdeenshire, please follow the Scottish Outdoor Access Code:
Respect the interests of others
Care for the environment
Take responsibility for your own actions
Scheduled Monuments

the Historic Churches trail
A guide to 13 of the best Historic Churches in Aberdeenshire

Thanks to Aberdeenshire Council for this publication

The Bronze Age 2500 BC - 800 BC
The Bronze Age is a period of time in the history of the world, which was characterized by the use of bronze. It was a time of significant technological and cultural advancement. In Aberdeenshire, there are many remains of Bronze Age settlements and structures, including stone circles and recumbent stone circles.

What are Stone Circles and Recumbent Stone Circles?
Stone circles are circular arrangements of standing stones. They are thought to have been used for religious or ceremonial purposes. Recumbent stone circles are a type of stone circle where the stones are laid on their sides. They are also thought to have been used for religious or ceremonial purposes.

When exploring Aberdeenshire, please follow the Scottish Outdoor Access Code:
Respect the interests of others
Care for the environment
Take responsibility for your own actions
Scheduled Monuments

the Stone Circle trail
A guide to ten of the best Stone Circles in Aberdeenshire

Thanks to Aberdeenshire Council for this publication

CAIRNGORM BOTHIES

Book Your Bothy



What Attractions ?

An overview of whats nearby us...

Logie Coldstone is a small village located in Aberdeenshire, Scotland. Despite its size, there are several attractions and activities within a short distance from the village. Here are some of the top attractions near Logie Coldstone:

1. **Royal Lochnagar Distillery:** The Royal Lochnagar Distillery is a short drive from Logie Coldstone and offers guided tours of the distillery, where visitors can learn about the whisky-making process and sample some of the finest single malts in Scotland.
2. **Corgarff Castle:** This 16th-century castle is a short drive from Logie Coldstone and is an excellent example of Scottish Baronial architecture. Visitors can explore the castle's history and enjoy the stunning views of the surrounding countryside.
3. **Braemar Castle:** This historic castle is located in the picturesque village of Braemar, a short drive from Logie Coldstone. Visitors can explore the castle's history and enjoy the stunning views of the surrounding countryside.
4. **Deeside Activity Park:** This adventure park is a short drive from Logie Coldstone and offers a range of activities, including quad biking, clay pigeon shooting, archery, and more.
5. **Crathes Castle** is a historic located near Banchory. It was built in the 16th century by the Burnetts of Leys and is now owned by the National Trust for Scotland. The castle is a popular tourist attraction, offering visitors a glimpse into the history and culture of Scotland.
6. **Balmoral Castle** is one of the residences of the British Royal Family, and it has been a popular tourist attraction for many years. The castle is located near the village of Crathie and is surrounded by beautiful gardens and rolling hills. The castle was originally built in 1856 for Queen Victoria and Prince Albert as a private residence. Since then, it has been used by the Royal Family as a holiday home. The castle is open to the public from April to July each year when the Royal Family is not in residence.



[Book Your Bothy](#)

More Ideas of Whats On & Things to See & Do

An overview of whats nearby us...



Award Winning Macduff Marine Aquarium...



Even more ideas!



Whats On in the Cairngorms



Balmoral Castle & Estate...



Prince Alberts Cairn



Book Your Bothy



[More with VisitAberdeenshire](#)

[More with VisitCairngorms](#)

Which of Our Local Villages?

An overview of whats nearby us...

Logie Coldstone is a small village in Aberdeenshire, Scotland, located near the Cairngorms National Park. Here are some of the other local villages and towns near Logie Coldstone:

1. Tarland: A picturesque village located about 6 miles north of Logie Coldstone. It has a range of small shops, cafes, and restaurants, as well as a historic church and several walking trails. **Small Premier Store**
2. Aboyne: A small town located about 8 miles east of Logie Coldstone. It has a range of shops, restaurants, and pubs, as well as a golf course and a swimming pool. **Coop Store**
3. Ballater: A historic town located about 13 miles west of Logie Coldstone. It is known for its scenic beauty and traditional Scottish architecture. The town has a range of shops, restaurants, and pubs, as well as a golf course and a railway station. **Coop Store**
4. Braemar: A small village located about 18 miles west of Logie Coldstone. It is known for its scenic beauty and historic landmarks, including Braemar Castle and the Braemar Gathering, which is a traditional Highland games event held each September. **Small ScotMid Coop**
5. Alford: A small town located about 11 miles northeast of Logie Coldstone. It has a range of shops, restaurants, and pubs, as well as several historic landmarks, including the Alford Valley Railway and the Kildrummy Castle. **Coop Store**
6. Banchory: A small town located about 8 miles east of Aboyne. It has a range of shops, restaurants, and pubs, as well as several local attractions, including the Falls of Feugh and the Crathes Castle. **Tesco, Morrisons and Coop**
7. Aberdeen is the third largest city in Scotland and offers a range of attractions, shops, and restaurants. **Main shopping stores.**



[Book Your Bothy](#)



[More Food & Drink with VisitAberdeenshire](#)

[More Food & Drink with VisitCairngorms](#)

Where to Eat?

An overview of some of whats nearby us...

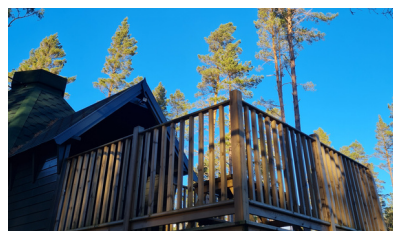
Logie Coldstone is a small village in Aberdeenshire, Scotland, but there are several options for eating out in the nearby towns and villages. Here are a few suggestions:

1. The Boat Inn: This family-run restaurant is located in Aboyne and offers a range of dishes made with locally sourced ingredients, including seafood, beef, and game. They also have a selection of vegetarian and gluten-free options.
2. The Milton Brasserie: This stylish restaurant is located in Crathes and offers a range of modern Scottish dishes made with fresh, locally sourced ingredients.
3. Balmoral Arms in Ballater, the perfect place to enjoy a taste of the Cairngorms, with fresh produce from the surrounding hills and lochs.
4. The Glenbuchat Hall Tearoom: This charming tearoom is located in Strathdon and offers a range of homemade cakes, sandwiches, and light meals. They also have a selection of teas and coffees.
5. The Fife Arms Hotel: This historic hotel is located in nearby Braemar and offers a range of dining options, including a formal restaurant, a casual bar, and a whisky snug. They serve traditional Scottish dishes made with local ingredients.
6. The Kildrummy Inn: This traditional Scottish inn is located in nearby Alford and offers a range of locally sourced dishes, including seafood, game, and vegetarian options. They also have a selection of fine wines and whiskies.
7. The Forbes Arms Hotel- Bridge of Alford The hotel boasts a new dining experience, riverside restaurant and outdoor patio area overlooking the River Don. A relaxing atmosphere to enjoy high quality local Scottish produce.

Notes

The Airdale in Logie Coldstone - Please note this currently closed.

Loch Kinord Hotel in Dinnet - Offers dining for their residents, but may accommodate a booking. Please call.



[Book Your Bothy](#)



Family Fun Suggestions with Us at Cairngorm Bothies...

Sharing some Outdoor & Online Fun...

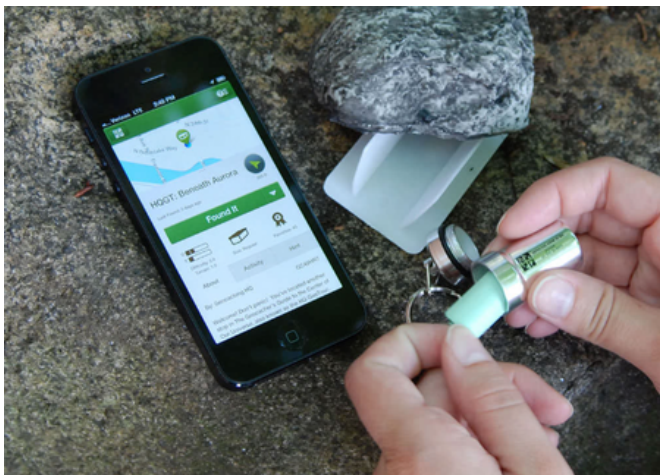


*Visit Cairngorms Photo Posts -
Parkin's Moss Trail*

Find Out More



Forest Floor Creative



Geocaching - E

Find Out More



Book Your Bothy



Family Fun Suggestions with Us at Cairngorm Bothies...

Sharing some Outdoor & Online Fun...

My Puzzles > Scottish Red Squirrel > Red squirrel scotland

Play As Share Edit



Sharing some rainy day fun

Wildlife in the Cairngorms National Park

P	T	A	R	M	I	G	A	N	L	A	E
E	T	T	O	A	G	W	B	M	A	D	L
L	E	G	S	G	A	A	A	O	R	D	C
G	T	N	P	T	D	D	P	U	E	E	A
A	E	B	R	G	R	D	E	N	D	E	P
E	A	N	E	O	T	E	O	T	S	E	E
N	A	R	Y	E	R	R	T	A	Q	L	R
E	W	I	L	D	C	A	T	I	U	L	C
D	N	I	T	R	A	M	E	N	I	P	A
L	E	E	O	R	M	A	R	H	R	A	I
O	G	G	C	U	E	L	D	A	R	G	L
G	N	R	E	D	D	E	E	R	E	N	L
R	H	G	G	R	O	U	S	E	L	U	I
A	O	R	L	S	N	O	M	L	A	S	E

- ADDER
- WILDCAT
- BADGER
- GOLDEN EAGLE
- GROUSE
- CAPERCAILLIE
- PINEMARTIN
- SALMON
- MOUNTAIN HARE
- PTARMIGAN
- OSPREY
- RED DEER
- OTTER
- RED SQUIRREL

Play Online



Download & Print

*NB Print out before you arrive



Book Your Bothy

Play Online



Other Activities & Useful Information...

Sharing some ideas...



Visit Aberdeenshire



Visit Cairngorms



Visit Moray Speyside



Winter Activities



Mountain Biking Deeside Trail



Walking



Discounted North East Sightseeing



Taking a North East Scotland Road Trip



Respect Protect Enjoy



Book Your Bothy